

INSTALLATION INSTRUCTIONS

TRITON CLAMP ASSEMBLY - CABLE MOUNT

With 3/16" Stainless Steel Cable

Tools Required: 9/16", 5/8" and 11/16" (deep) Socket, Box End Wrench or Ratchet (7" length approx.)
1/4", 5/16" and 3/8" Open End Wrenches

Note: Do not pull the free cable end out of the Cable Plate during the installation.

The 45" cable length fits 4" to 12" diameter poles. Please read all the instructions before starting the installation.

Attaching Clamp Kit to Mast Arm or Pole

(Note: A helper to the installer will facilitate the installation)

1. Place Cable Mount Clamp on the mast arm and insert each cable screw assembly into the pawl area of the clamp casting as shown in Fig. 1. Leave 2 to 3 threads exposed at the end of the Clamp Screw as shown in Fig. 2.
2. If a cable is tight, loosen the two 3/8" bolts on its Cable Clamp Plate. Starting with the middle cable, with the Cable Screw Assembly in its pawl, pull the other end of the cable until it is tight around the mast arm. **DO NOT PULL THE FREE END OF THE CABLE OUT OF THE CABLE CLAMP PLATE.** Secure the cable by evenly tightening the two 3/8 bolts on the Cable Clamp Plate to 20-22 ft-lb of torque. Repeat this step with the other two (outer) cables.
3. Back off each 7/16" cable screw nut to loosen the cables and adjust the Triton Clamp to the desired position on the mast arm or pole such as shown in Figure 3. Snug the cable screw nuts just enough to hold the Clamp Kit in position.

NOTE: WHEN TIGHTENING THE CABLE SCREW ASSEMBLY, HOLD THE HEX PORTION WITH A 3/8" OPEN END WRENCH, OR EQUIVALENT. DO NOT ALLOW THE CABLE TO TWIST OR TURN AS THE CABLE NUT IS BEING TIGHTENED.

4. Starting with the center cable, with the 3/8" Open End Wrench holding the cable screw, use the 11/16 socket and ratchet or box end wrench to tighten each Cable Screw nut to 20-22 ft-lb. of torque. **DO NOT OVERTIGHTEN.**

(instructions continued on back)

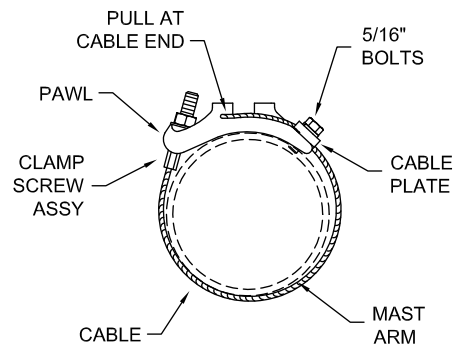


Figure 1

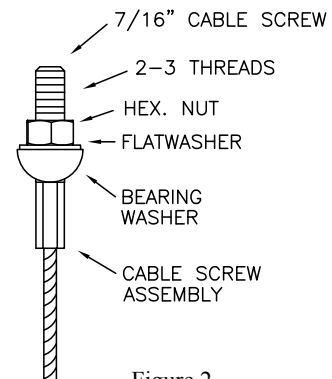


Figure 2

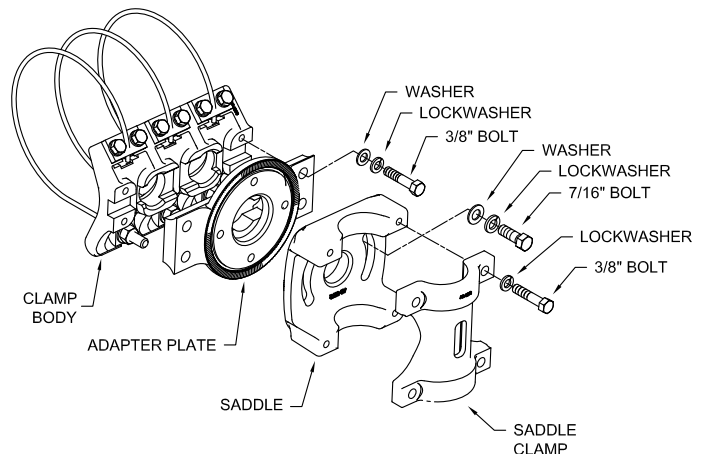


Figure 3



INSTALLATION INSTRUCTIONS

TRITON CLAMP ASSEMBLY - CABLE MOUNT

With 3/16" Stainless Steel Cables

Tools Required: 9/16", 5/8" and 11/16" (deep) Socket, Box End Wrench or Ratchet (7" length approx.)
1/4", 5/16" and 3/8" Open End Wrenches

Note: Do not pull the free cable end out of the Cable Plate during the installation.

Attaching Camera, or Sign, Pole Mounting Bracket to the Clamp Kit.

5. Wrap the free ends of the cables around the top of the Clamp in the slots provided on the clamp body. Then, position the Adapter Plate on the Clamp making sure the cables are not pinched between the Clamp and Adapter bodies. Secure the Adapter Plate to the Clamp body using the four 3/8" Hex Hd bolts, flat washers and lock washers, tightening the bolts with a 9/16 Box End Wrench to 18-20 ft-lb of torque.
6. The free end of each cable may now be looped around the mast arm, or pole, if it is long enough, and passed back into the cable slot in the clamp between the clamp and the adapter plate. If the cable is not long enough to do this, it may simply be looped and inserted back into the cable slot in the clamp between the clamp and the adapter plate.
7. With the Saddle aligned close to the desired orientation for the 2" Sch40 pipe, engage the Saddle's serrations with the serrations on the Adapter Plate, then install the 7/16" bolts, washers, and lock nuts holding the Saddle to the Adapter and tighten them with a 5/8" Box End Wrench to 20-22 ft-lb. Then, loosely assemble the Saddle Clamp to the Saddle with the 3/8" bolts and lock washers, but do not tighten the bolts at this time.
8. With the camera and its brackets installed on the camera support pipe, insert and position the 2" Sch 40 pipe between the Saddle and Saddle Clamp and tighten the 3/8" Saddle Clamp bolts to 18-20 ft-lb of torque with the 9/16" Box end Wrench. If the Triton Bracket is being used as sign support assembly, some modification of this step will need to be made depending on the manner in which the sign is supported by the 2" Sch40 pipe.

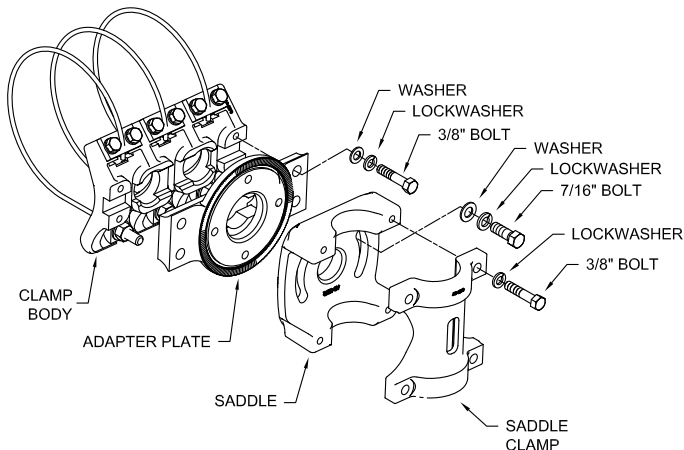


Figure 1

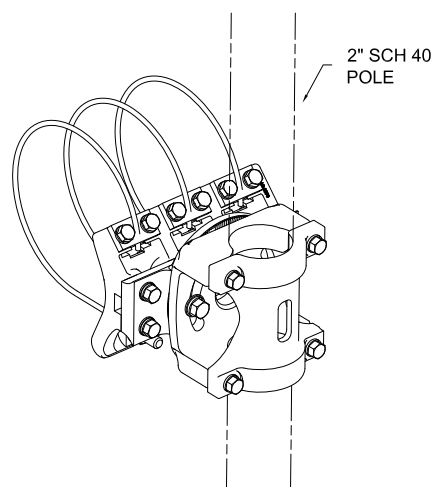


Figure 2