

INSTALLATION INSTRUCTIONS

TRITON CLAMP ASSY

5/8" Stainless Steel Bands

Tools Required: 9/16", 5/8" and 11/16" (deep) Socket, Box End Wrench or Ratchet (7" length approx.)
5/32" Allen Wrench, Hammer, Pliers & Band Cutter (Wiss No. M5 recommended)

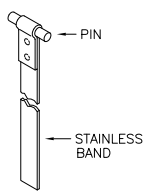


Figure A

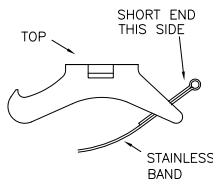


Figure B

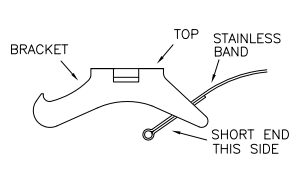


Figure C

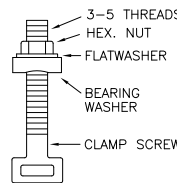


Figure D

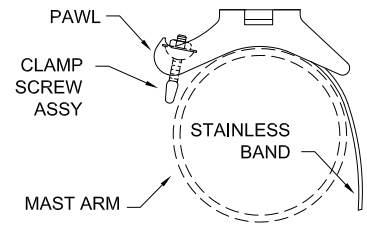


Figure 1

The Triton Clamp Kit is designed to fit small diameter poles (4" O.D.) as well as large diameter poles (4-1/2" and up O.D.). The band attachment to the Clamp body depends on the mast arm or pole size. Please read all the instructions before starting the installation

For Small Diameter Poles: Remove the small bend in the welded pin end of the bands with a hammer and thread the Bands (Fig. A) from the top down (Fig. B) making certain the pins seat into the grooves provided in the top of the Clamp body.

For Large Diameter Poles: Thread Bands (Fig. A) into the Clamp body from the bottom up (Fig. C) making certain the pins seat into the grooves in the bottom of the Clamp body.

Attaching Clamp Kit to Mast Arm or Pole (NOTE: A helper to the installer will facilitate the installation)

1. Thread all three bands into the Clamp and place the Clamp on top of the mast arm as shown in Fig. 1. Place a screw assembly (Fig. D) in the center pawl of the Clamp body, as shown in Fig. 1, with the Hex Nut flush with the end of the Clamp screw threads. Start Step 2 with the center band
2. Bend the stainless band tightly around the arm, marking it at the point where it makes contact with the slotted end of the screw assembly (Fig. 2).

NOTE: It may be helpful to tap the band slightly with a hammer to keep it close to the mast arm.

3. Slide a Band Buckle on the band with the setscrew to the outside (Fig. 3). Bend the band to the inside at a point about 3/4" outward from the mark made in Fig. 2, remove the screw assembly from the pawl, and slide it on the band (Fig. 3).

NOTE: Make certain the free end is turned to the inside and is a minimum of 4" long as shown in Fig. 3. If the free end of the band is too long to wrap inside the the band, cut off the extra length.

4. With a pair of pliers, crimp* the bend in the band around the clamp screw and slide the band buckle on the free end of the band as close to the screw assembly as possible (Fig. 4). Tighten the setscrew in the band buckle snugly with a 5/32" Allen wrench.

***Caution:** Make certain measurements are correct BEFORE bending the band. Once the band is bent and crimped, DO NOT straighten and re-bend – replace with a new band. The bending process works the band and repeated bending may cause fatigue resulting in a loss of strength in the band.

(Instructions continued on back.)

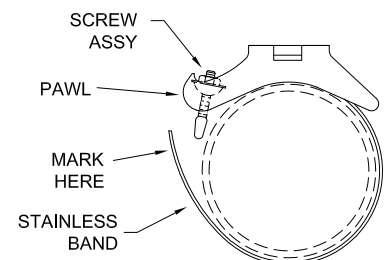


Figure 2

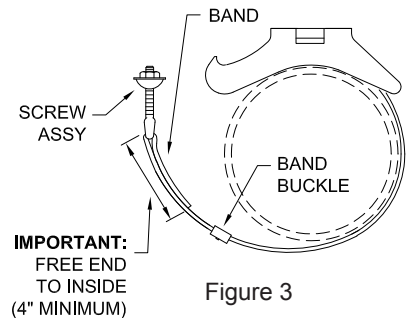


Figure 3

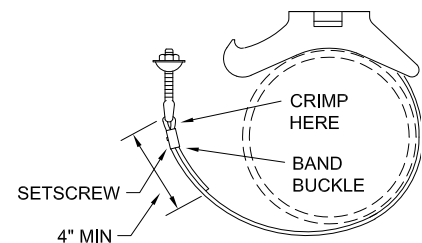


Figure 4

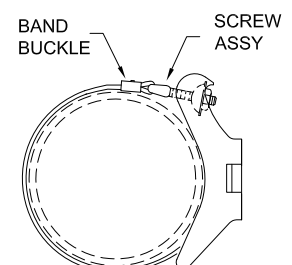


Figure 5

INSTALLATION INSTRUCTIONS

TRITON CLAMP ASSY 5/8" Stainless Steel Bands

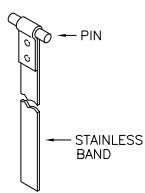


Figure A

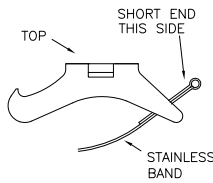


Figure B

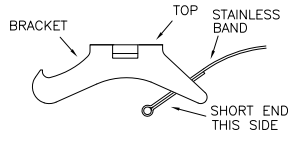


Figure C

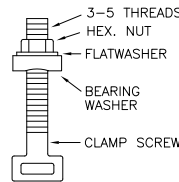


Figure D

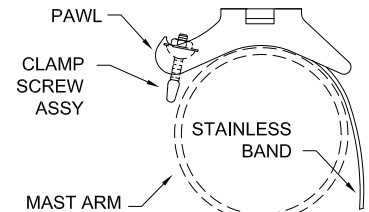


Figure 1

5. Insert the screw assembly in the pawl of the clamp from which it was removed. Tighten the nut on the screw assembly until it is just snug. Firmly tighten the band buckle set screw.
6. Place screw assemblies in the outside pawls of the clamp body, as shown in Fig. 1, with the Hex Nuts flush with the end of the clamp screw threads and repeat steps 2 through 5 for both outer bands.
7. Rotate the clamp assembly so it is on the side of the mast arm with the clamp screws on top side (Fig. 5). Slightly loosening the screw assembly nuts may be necessary.
8. Starting with the center clamp screw, tighten each clamp screw nut securely, using an 11/16" Box End Wrench, Ratchet, or Torque Wrench to about 18-20 ft-lb.

NOTE: Tightening the clamp screw nut firmly with a 7" long wrench will produce approximately 20 ft-lb of torque. This is all that is necessary to hold the bracket in place. DO NOT OVERTIGHTEN.

9. Attach the Adapter Plate to the clamp body using the four 3/8" hex head bolts, flat washers and lock washers, tightening the bolts with a 9/16 Box End Wrench to 18- 20 ft-lb of torque.
10. With the Saddle aligned close to the desired orientation for the 2" Sch40 pipe, engage the Saddle's serrations with the serrations on the Adapter Plate, then install the 7/16" bolts, washers, and lock nuts holding the Saddle to the Adapter and tighten them with a 5/8" Box End Wrench to 20-22 ft-lb. Then, loosely assemble the Saddle Clamp to the Saddle with the 3/8" bolts and lock washers, but do not tighten the bolts at this time.
11. With the camera and its brackets installed on the pipe, insert and position the 2" Sch 40 pipe between the Saddle and Saddle Clamp and tighten the 3/8" Saddle Clamp bolts to 18-20 ft-lb of torque with the 9/16" Box End Wrench. If the Triton Bracket is being used as sign support assembly, some modification of this step will need to be made depending on the manner in which the sign is supported by the 2" Sch 40 pipe.

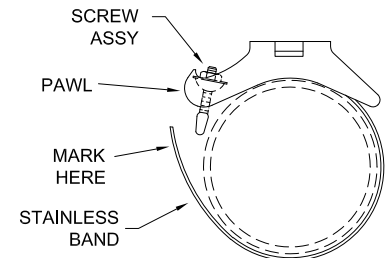


Figure 2

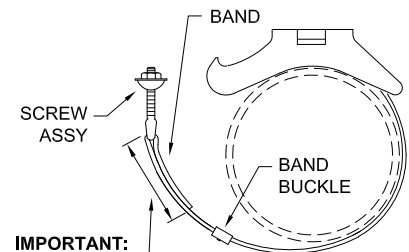


Figure 3

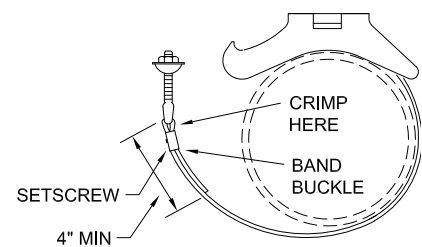


Figure 4

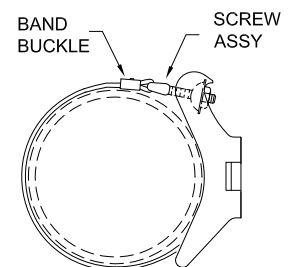


Figure 5

