

INSTALLATION INSTRUCTIONS

AB-0506 Ty-Back/Restraining Clamp for Cable Mount Astro-Bracs

Tools Required: Phillips Screw Driver, #2 and Boxed End/Open End Wrench, 3/8"

Purpose:

With cable-type Astro-Brac Clamp Kits it is common to have an excess amount of cable after installation (Fig. 1). The purpose of the Ty-Back Restraining Clamp is to neaten the appearance of the mounting while providing a positive cable restraint (Fig. 2). See *instructions on opposite side*.



Figure 1



Figure 2



Edmond, OK 73013 · Ph: 405-340-3434 · Fax: 405-340-3435 · www.pelcoinc.com

Bulletin No. 2037 Rev. 3/16/09

INSTALLATION INSTRUCTIONS

AB-0506 Ty-Back/Restraining Clamp for Cable Mount Astro-Bracs

Tools Required: Phillips Screw Driver, #2 and Boxed End/Open End Wrench, 3/8"

Purpose:

With cable-type Astro-Brac Clamp Kits it is common to have an excess amount of cable after installation (Fig. 1). The purpose of the Ty-Back Restraining Clamp is to neaten the appearance of the mounting while providing a positive cable restraint (Fig. 2). See *instructions on opposite side*.



Figure 1



Figure 2



Edmond, OK 73013 · Ph: 405-340-3434 · Fax: 405-340-3435 · www.pelcoinc.com

Bulletin No. 2037 Rev. 3/16/09

INSTALLATION INSTRUCTIONS

AB-0506 Ty-Back/Restraining Clamp for Cable Mount Astro-Bracs

Attaching Ty-Back to Cable:

1. Position the excess cable on each side of the vertical Tube. (Fig. 3)
2. Insert each free loop of cable into either side of the Restraining Clamp. (Fig. 4)
3. Tighten the clamp screw on Restraining Clamp and then tighten Hex Lock Nut on clamp. (Fig. 5). See *Figure 2 on opposite side*.



Figure 3



Figure 4

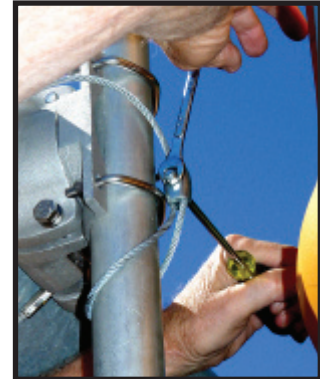


Figure 5



Edmond, OK 73013 · Ph: 405-340-3434 · Fax: 405-340-3435 · www.pelcoinc.com

Bulletin No. 2037 Rev. 3/16/09

INSTALLATION INSTRUCTIONS

AB-0506 Ty-Back/Restraining Clamp for Cable Mount Astro-Bracs

Attaching Ty-Back to Cable:

1. Position the excess cable on each side of the vertical Tube. (Fig. 3)
2. Insert each free loop of cable into either side of the Restraining Clamp. (Fig. 4)
3. Tighten the clamp screw on Restraining Clamp and then tighten Hex Lock Nut on clamp. (Fig. 5). See *Figure 2 on opposite side*.



Figure 3

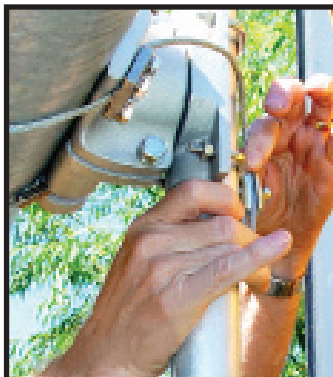


Figure 4

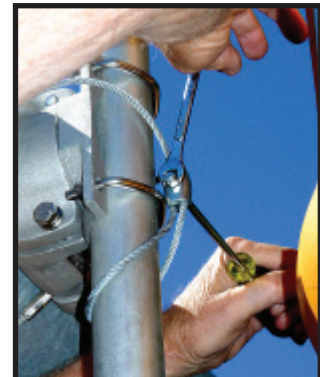


Figure 5



Edmond, OK 73013 · Ph: 405-340-3434 · Fax: 405-340-3435 · www.pelcoinc.com

Bulletin No. 2037 Rev. 3/16/09